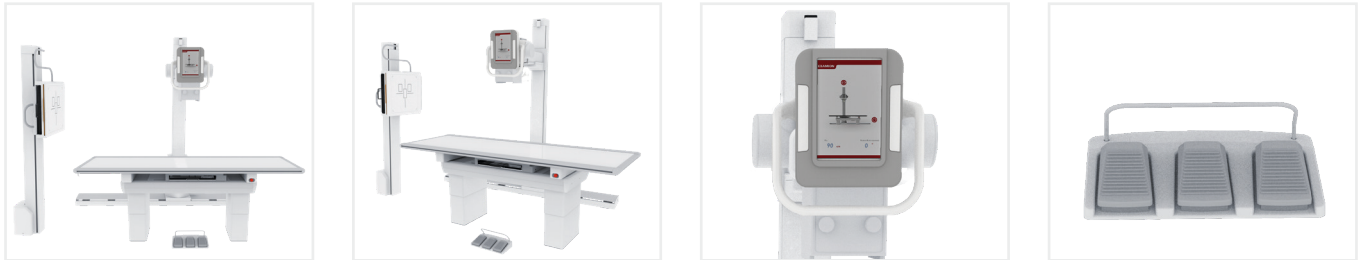


X-DRS Floor Standard E

Technical Specifications



Floor Mounted Tube Stand

Display	10" Tubehead Display
Longitudinal travel (tube stand)	190 cm ± 1 cm (74.8" ± 0.4") Manual movement, electromagnetic brakes
Vertical travel (focal spot)	149 cm ± 1 cm (58.7" ± 0.4") Manual movement or motorized tracking, electromagnetic brakes
Transverse travel (tube arm)	12 cm ± 1 cm (4.8" ± 0.4") Manual movement, electromagnetic brakes
Column rotation	± 90° Manual rotation, mechanical brake
Tube rotation	± 135° Manual rotation, electromagnetic brake
Tracking	Tube position is tracked by the bucky of the table also for oblique images. Bucky position of the wall stand is tracked by the tube. Table height is tracked by the tube.

Wall Stand

Vertical travel (bucky)	Min.: 40 cm (15.7") Max.: 189 cm (74.4") Manual and motorized, electromagnetically braked
Bucky	For cassettes or mobile flat detectors

6-Way Patient Table (Elevating)

Tabletop dimensions	228 cm x 80.6 cm (89.8" x 31.8")
Tabletop travel range	Longitudinal: 38 cm ± 1 cm (15" ± 0.4") Transverse: 9.5 cm ± 1 cm (3.8" ± 0.4")
Detector travel range	50 cm ± 1 cm (19.7" ± 0.4") Manual movement or motorized tracking

Vertical travel range	30 cm ± 1 cm (11.8" ± 0.4")
Max. patient weight	350 kg (771,62 lbs)
Bucky	For cassettes or mobile flat detectors
Kick switch	For float adjustment & elevating table top

Other Specifications

Generator	CPI CMP 200 DR, 50 kW, max. 630 mA, max. 150 kV, AEC, hand switch, 3 phases / N / PE, 400 V, incl. console Other generators on request
Tube	Varex RAD-14, focal spots 0.6 / 1.2 mm, 300 kHu, max. 150 kV, incl. high voltage cable, weight 17.4 kg (38.4 lbs) Optional: RAD 21, RAD 60
Collimator	Manually turnable, LED lamp, integrated timer, laser alignment
AEC	3-field measuring chamber with cable
DAP (optional)	DAP measuring device or DAP calculation, automatic integration into X-AQS X-ray journal
Warranty	5 years warranty on detectors 1 year warranty on all other components Extended warranty on request
Certification	CE 2460

Detector

Selectable Detectors	X-DR L WiFi	X-DR L WiFi Premium	X-DR XL WiFi	X-DR XL WiFi Premium
Pixel Size	150 µm	100 µm	139 µm	100 µm
Pixel Matrix	2,304 px x 2,800 px	3,500 px x 4,300 px	3,072 px x 3,072 px	4,267 px x 4,276 px
Weight	3.4 kg	2.8 kg	4.6 kg	3.4 kg
Protection Class	IPX1	IP56	IPX1	IP56
Uniform Load	150 kg	300 kg	100 kg	300 kg
Local Load	100 kg (4 cm diameter)	150 kg (4 cm diameter)	100 kg (4 cm diameter)	150 kg (4 cm diameter)

Software

Configurations	<p>EXAMION X-AQS DICOM Modality SCU</p> <ul style="list-style-type: none"> • DICOM Worklist SCU • DICOM Store SCU <p>EXAMION X-AQS PACS</p> <ul style="list-style-type: none"> • Integrated Mini-PACS
-----------------------	--